

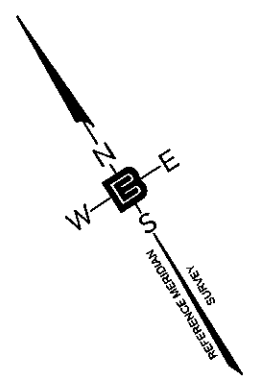
EXISTING DRAINAGE AREA
2.123 ACRES

TC PATH

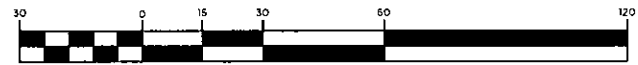
WEST 53RD STREET
(60' WIDE)

WEST 52ND STREET
(60' WIDE)

JOHN F. KENNEDY MEMORIAL BOULEVARD
(100' WIDE)

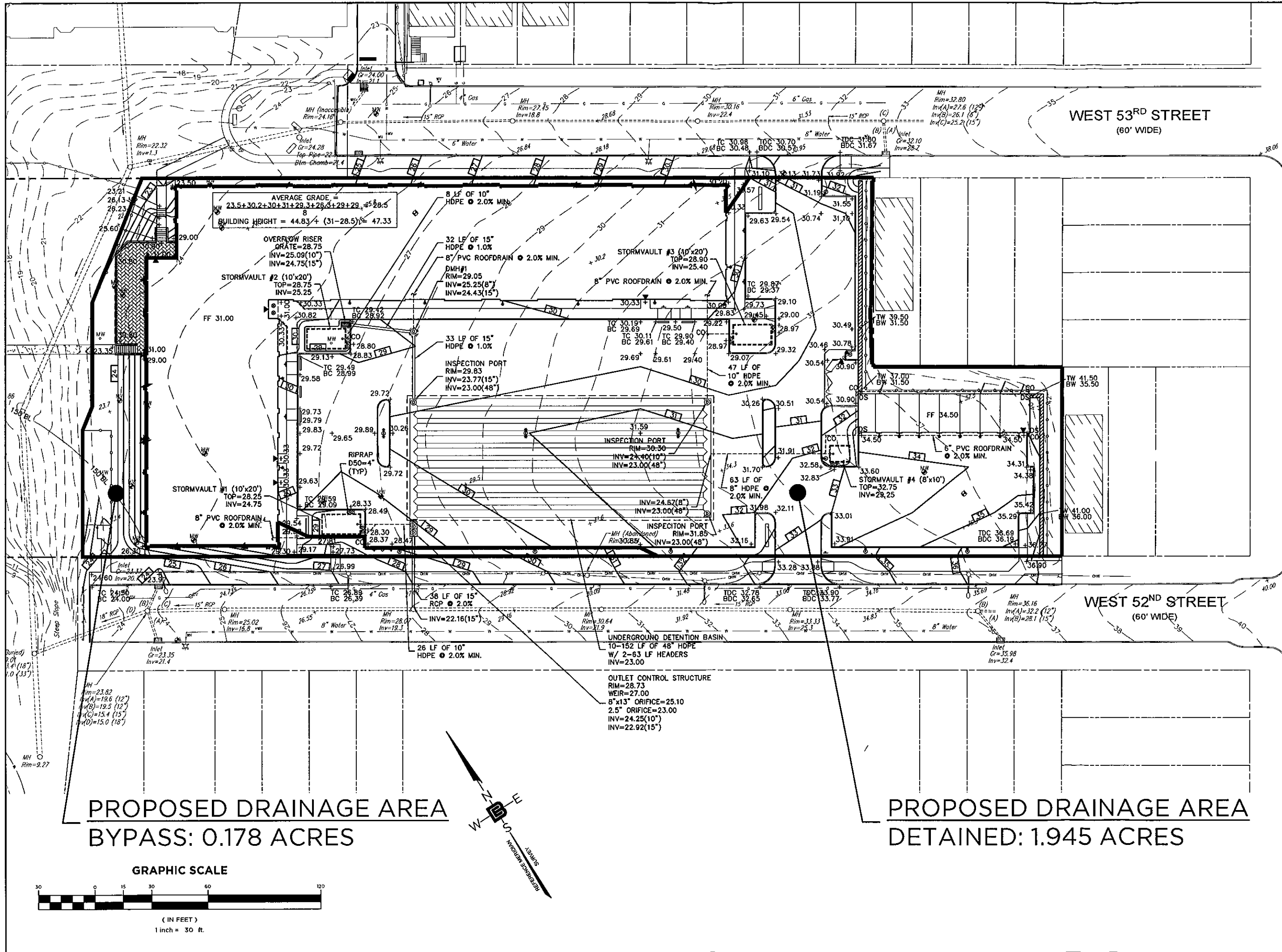


GRAPHIC SCALE



(IN FEET)
1 inch = 30 ft.

DM1: EXISTING DRAINAGE AREA MAP

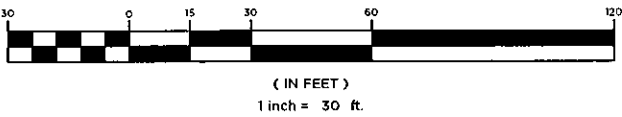


JOHN F. KENNEDY MEMORIAL BOULEVARD
(100' WIDE)

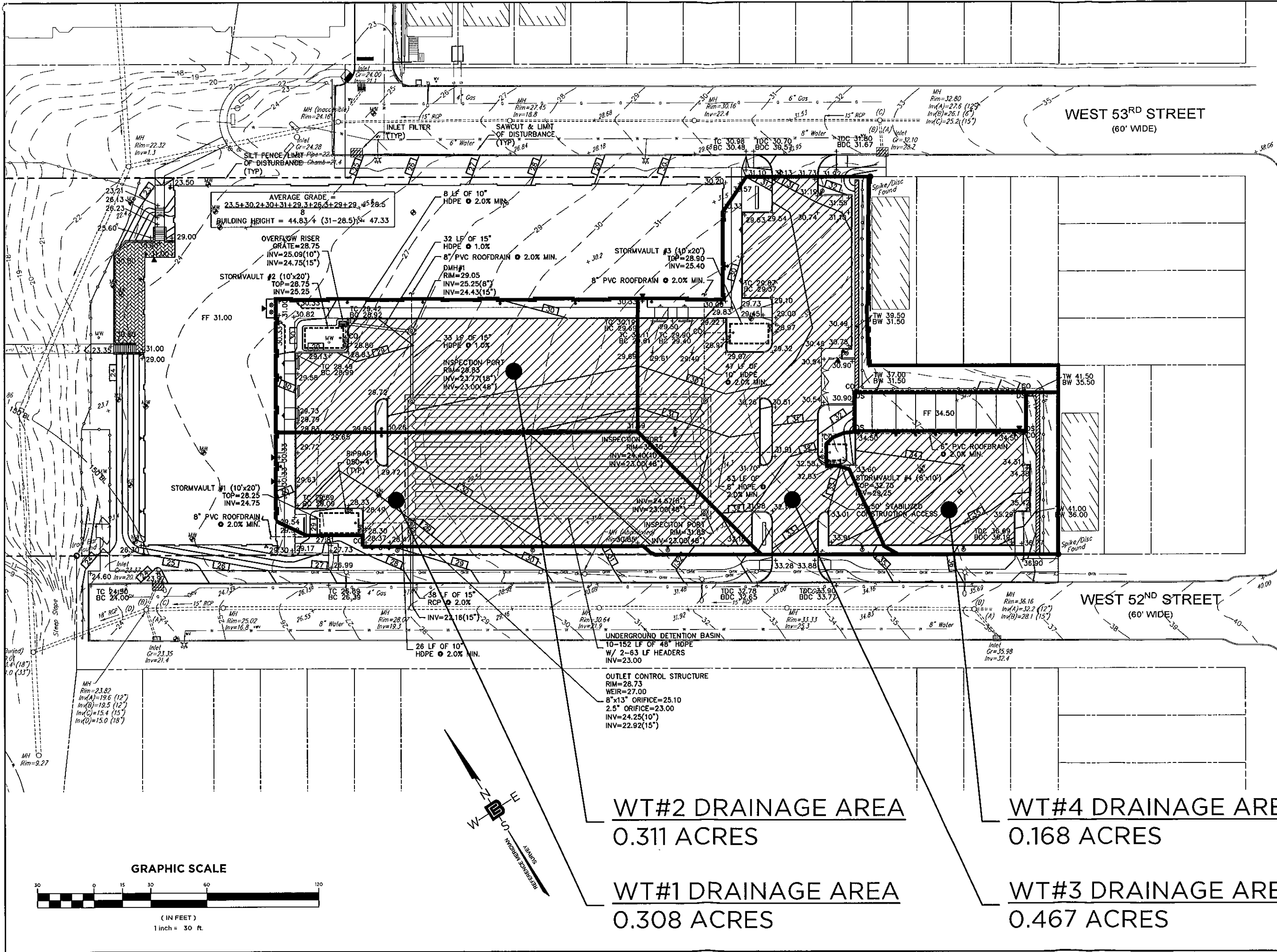
PROPOSED DRAINAGE AREA
BYPASS: 0.178 ACRES

PROPOSED DRAINAGE AREA
DETAINED: 1.945 ACRES

GRAPHIC SCALE



DM2: PROPOSED DRAINAGE AREA MAP



WEST 53RD STREET
(60' WIDE)

WEST 52ND STREET
(60' WIDE)

JOHN F. KENNEDY MEMORIAL BOULEVARD
(100' WIDE)

AVERAGE GRADE = $\frac{23.5+30.2+30+31+29.3+29.3+29+29}{8} = 28.5$
BUILDING HEIGHT = $\frac{44.83+31}{2} = 47.33$

WT#2 DRAINAGE AREA
0.311 ACRES

WT#4 DRAINAGE AREA
0.168 ACRES

WT#1 DRAINAGE AREA
0.308 ACRES

WT#3 DRAINAGE AREA
0.467 ACRES

GRAPHIC SCALE



(IN FEET)
1 inch = 30 ft.

DM3: INLET DRAINAGE AREA MAP