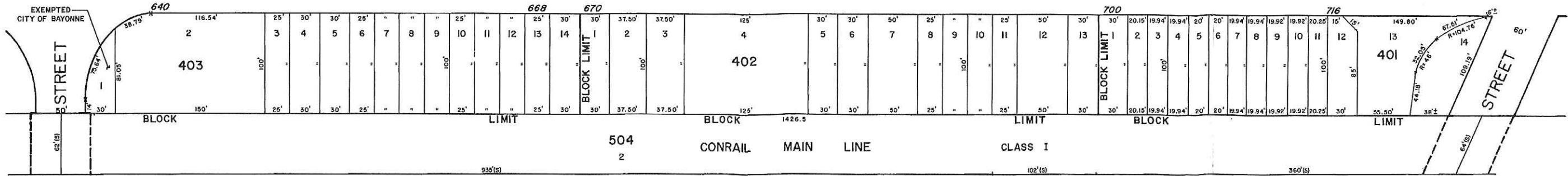


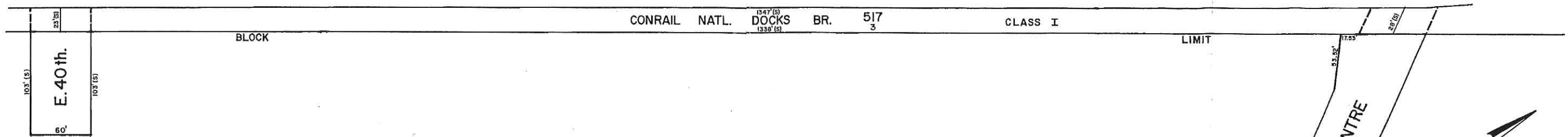


E. 40th ST. 60' E. 41st ST. 60' E. 42nd ST. 60' SHEET 25 E. 43rd ST. 60' E. 44th ST. 60' E. 45th ST. 60'

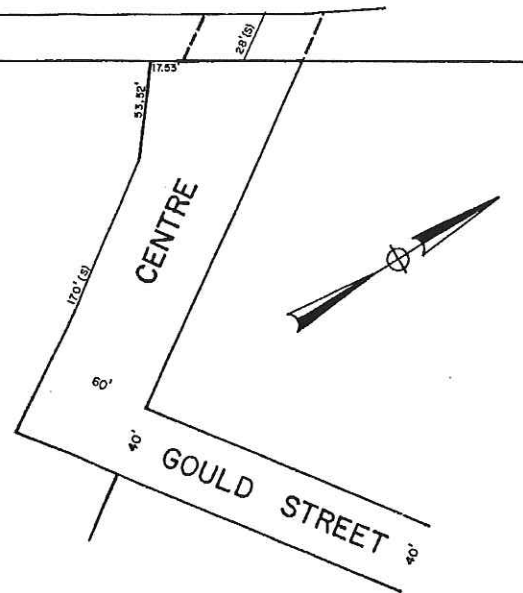
AVENUE "E"



ROUTE 169



MILITARY OCEAN TERMINAL



SHEET 116

SHEET 118

DATE	NO.	REVISIONS DESCRIPTION
6/22/89	1	HOUSE NUMBER ADDED
1/7/92	2	RECONFIGURATION OF LOT 3 BLK 503, LOT 2 BLK 504 & RT. 169
1/8/92	3	VACATION OF PART OF CENTRE ST & E. 40TH ST. INTO RT. 169
1/30/92	4	SUBDIVISION OF BLOCK 503 INTO BLOCKS 503, 506, 517 & 518
1/30/92	5	RENAME LOT 3 BLOCK 503 TO LOT 3 BLOCK 517

NEW JERSEY DEPARTMENT OF THE TREASURY  
 DIVISION OF TAXATION  
 LOCAL PROPERTY TAXES  
 APPROVED AS A TAX MAP PURSUANT TO THE  
 PROVISIONS OF CHAPTER 175, LAWS OF 1974, ETC.  
 FOR THE DIRECTOR, DIVISION OF TAXATION  
*[Signature]*  
 BY LIC. # 15434 P.E. & L.S.  
 DATE AUG-7-1987

**TAX MAP**  
**CITY OF BAYONNE**  
 HUDSON COUNTY, NEW JERSEY  
 SCALE: 1" = 50' DATE: MAY 1986  
**ROBERT H. ANDERSON, P.E. & L.S.**  
 PURCELL ASSOCIATES  
 33 CLINTON ROAD, WEST CALDWELL, NEW JERSEY