

DATE	
REVISION	
NO.	
BY	
DESCRIPTION	

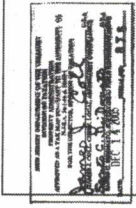
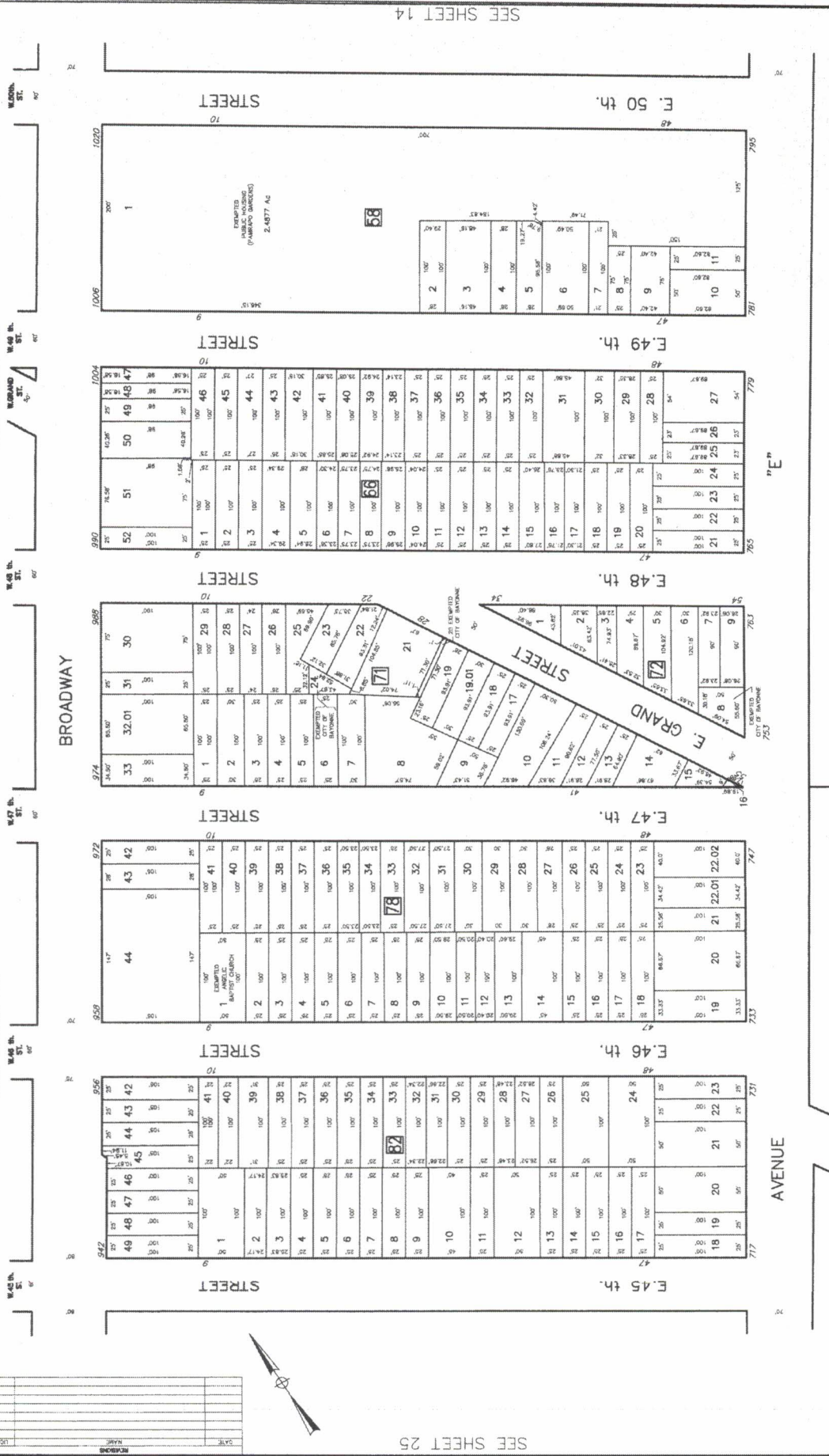


SEE SHEET 25

SEE SHEET 23

SEE SHEET 18

SEE SHEET 14



TAX MAP
 CITY OF BAYONNE
 HUDSON COUNTY, NEW JERSEY
 SCALE: 1" = 50'
 AUGUST, 2003
 RICHARD A. MORALLE, P.E., P.L.S.
 T & M ASSOCIATES
 11 TINDALL ROAD, MIDDLETOWN TOWNSHIP
 NEW JERSEY, 07748

SEE SHEET 118