

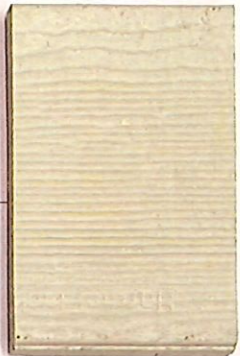
tabbles<sup>®</sup>  
**EXHIBIT**  
**A-25**  
**P-24-021**



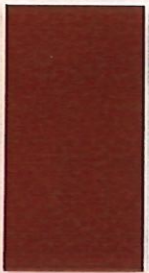
PROPOSED OPERABLE WINDOWS AND PATIO DOORS  
 • MANUFACTURER: ANDERSON  
 • COLOR: BLACK



PROPOSED FULL SET BRICK VENEER FINISH  
 • COLOR: #1  
 • MANUFACTURER: BOWERSTON  
 • COLOR: 721 DARK SMOOTH BLEND  
 • SERIES: MODULAR-FACE

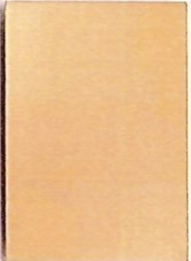


PROPOSED CEMENT BOARD PANEL  
 • MANUFACTURER: JAMES HARDIE  
 • SERIES: VERTICAL SIDING  
 • COLOR: COBBLE STONE



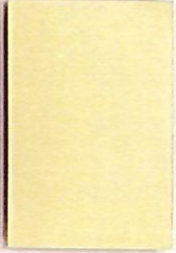
PROPOSED WOOD GRAIN PANEL CANOPY AND CORNICE  
 • MANUFACTURER: MACMETAL  
 • SERIES: HARRYWOOD  
 • 6" HIGH, HORIZONTAL  
 • WOOD GRAIN TEXTURE  
 • WOOD COLLECTION  
 • COLOR: CEDAR

PROPOSED VERTICAL METAL PANEL FINISH  
 • MANUFACTURER: ATAS INTERNATIONAL, INC.  
 • SERIES: OPALINE  
 • COLOR: P1  
 • COLOR: 15-RAWHIDE



OVERHEAD GARAGE DOOR  
 • MANUFACTURER: CH1 OVERHEAD DOORS  
 • MODEL: FULL-VIEW WITH TRANSLUCENT PANELS

PROPOSED METAL COMPOSITE PANEL FINISH  
 • MANUFACTURER: LAMINATORS  
 • SERIES: OMEGA LIFE  
 • COLOR: P2  
 • COLOR: CONCORD CREAM



PROPOSED GLASS RAILING SYSTEM WITH METAL FRAMES  
 • MANUFACTURER: HANSEN SYSTEMS  
 • GLASS: SKY WHITE GLOSS COLOR  
 • FRAME: SERIES 300V - SILVER



**A** EAST ELEVATION  
 1/8" = 1'-0"

PRELIMINARY AND FINAL MAJOR SITE PLAN FOR RESIDENTIAL DEVELOPMENT  
 85-92 EAST 22<sup>ND</sup> STREET & 107-111 AVENUE F  
 BLOCK 455, LOTS 7, 8, 9, 11, 12, 13, 14, 15  
 BAYONNE, NEW JERSEY

Drawing Title  
**EXTERIOR MATERIALS EAST ELEVATION**

No.	Date	Revised

DATE	BY	REVISION

APPROVED BY:  
 DATE: 08/20/24  
 SCALE: AS NOTED  
 DRAWN BY: [Name]  
 CHECKED BY: [Name]  
 PROJECT NO.: [Number]  
 SHEET NO.: [Number]  
 TOTAL SHEETS: [Number]

**DAL design group**  
 ARCHITECTURE & ENGINEERING & PLANNING  
 ELEVEN SEIT EIGHTH STREET  
 BAYONNE, NEW JERSEY 07002  
 TEL: (201) 371-0779

© DL DESIGN GROUP 2024  
 Drawing No.  
**MB1.1**