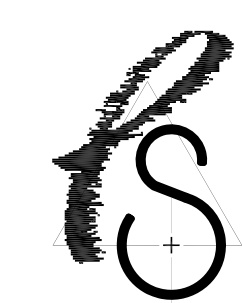


PARETTE
SOMJEN

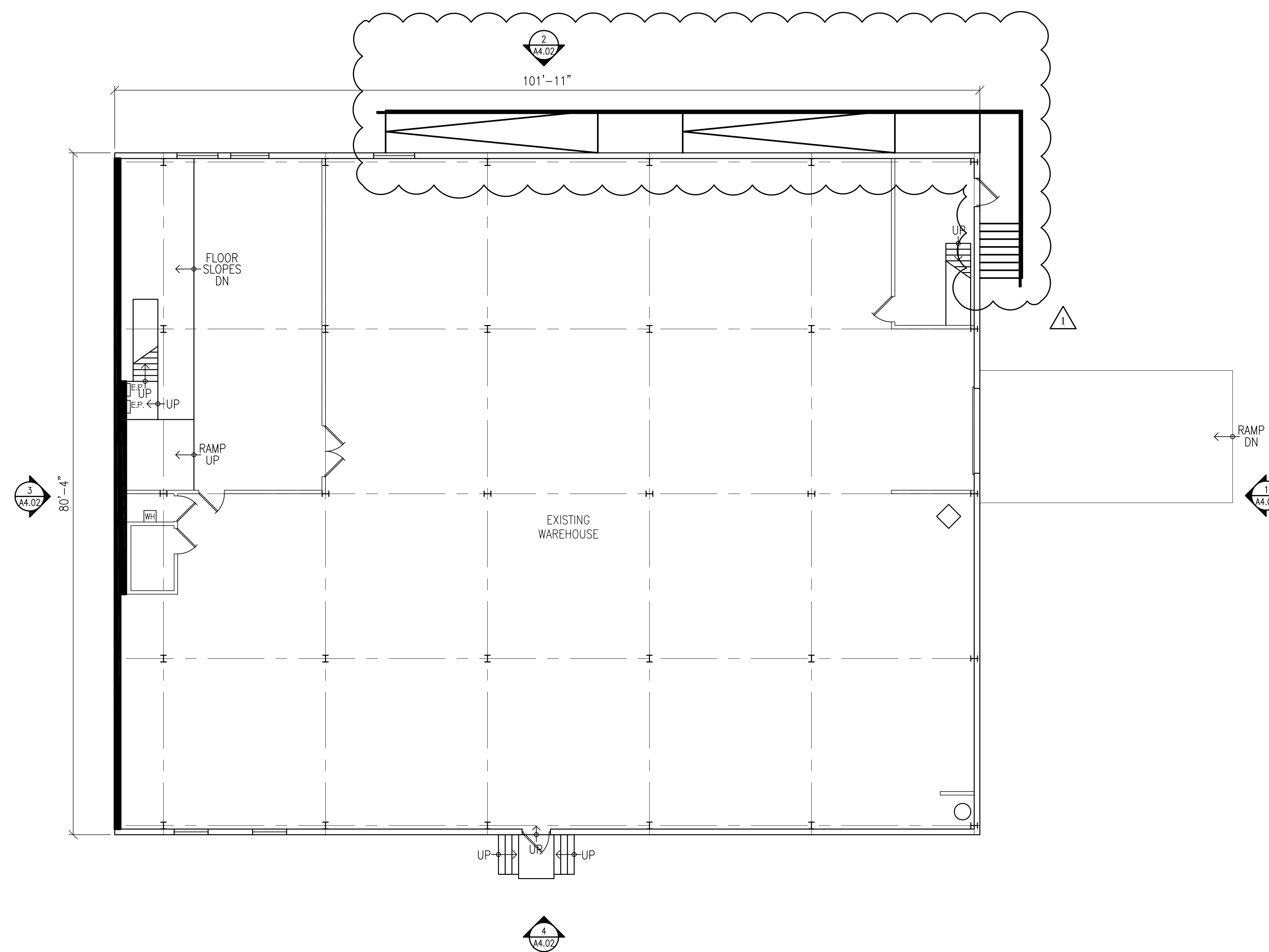


ARCHITECTS

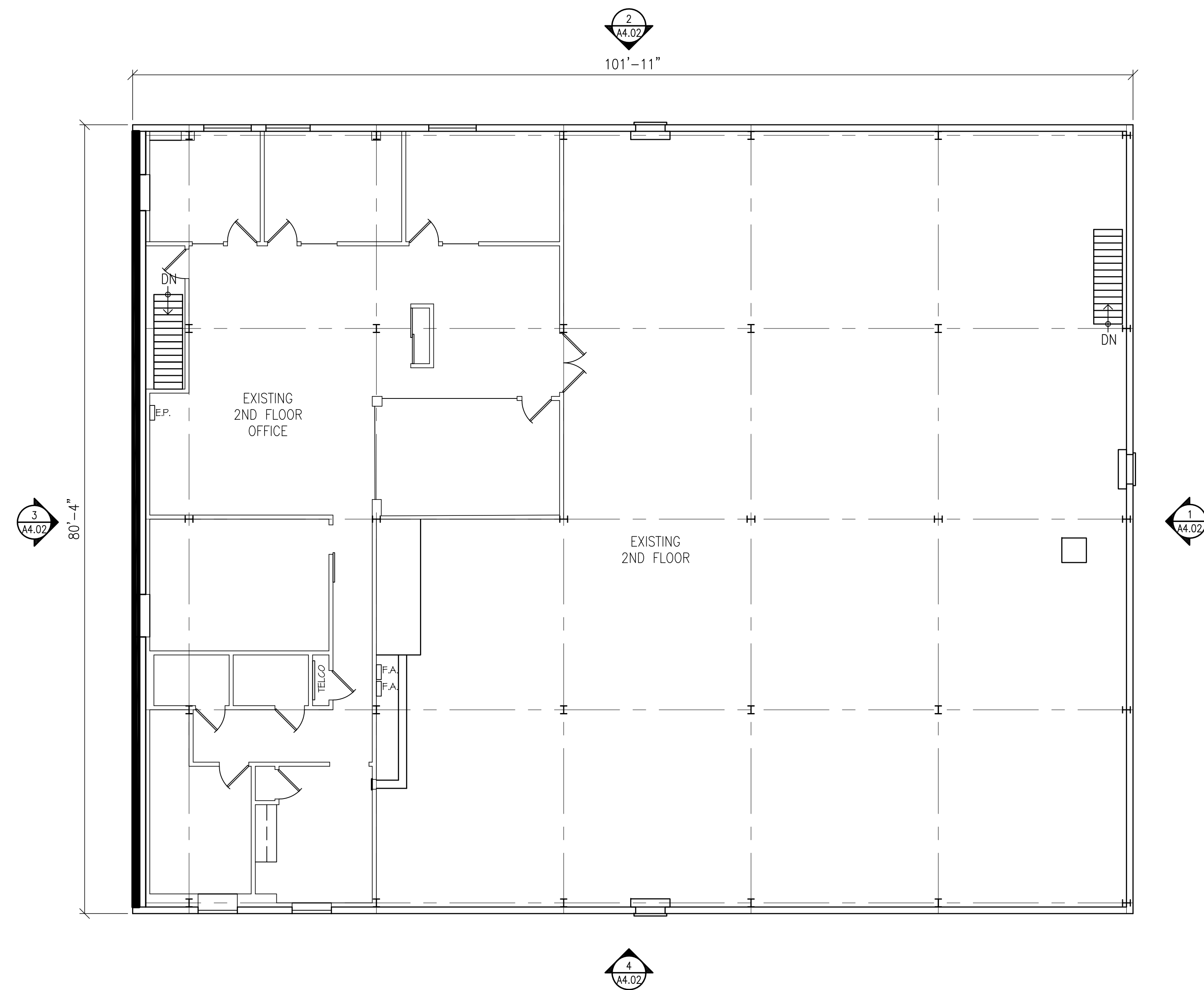
A LIMITED LIABILITY CORPORATION
CERT. NO. 21A00009800
439 Route 46 East
Rockaway, NJ 07866
Tel. 973.586.2400
Fax. 973.586.2401
www.planetPSA.com

PROPOSED IMPROVEMENTS FOR:
PROLOGIS
BAYONNE BUILDING
PROJECT

148 E 5TH STREET
BAYONNE, NJ 07002
BLOCK: 359 LOT: 7



1 BUILDING 7A GROUND FLOOR PLAN SCALE: 1/8" = 1'-0"



2 BUILDING 7A 2nd FLOOR PLAN SCALE: 1/8" = 1'-0"

- 1 07/08/22 AS NOTED
- 0 2022-03-29 PLANNING BOARD

REV	DATE	REMARK
0		<ul style="list-style-type: none"> □ Marc R. Parette A.I.A. <ul style="list-style-type: none"> NCARB Registration 44264 New Jersey Architect 10436 New York Architect 024312 Pennsylvania Architect 014798B Maryland Architect 10645 New Jersey Planner 4981 Alabama Architect 5996 Louisiana Architect 6361 Florida Architect AR 93131 Michigan Architect 1301053053 Nevada Architect 6311 □ Gregory J. Somjen A.I.A. <ul style="list-style-type: none"> NCARB Registration 47178 New Jersey Architect 13349 Massachusetts Architect 9629 Delaware Architect 6616 Virginia Architect 0401 011210 Connecticut Architect 8922 New York Architect 032435-1 Nevada Architect 6380 District Of Columbia Architect 101294 □ Edward H. Neighbour A.I.A. <ul style="list-style-type: none"> New Jersey Architect 11568

SIGNATURE

**BUILDING
7A PLANS**

THE SCALE REPRESENTED ON THESE DRAWINGS IS ONLY VALID IF THE DRAWING IS 47" x 37". DRAWINGS WHICH ARE NOT PLOTTED AT THE SPECIFIED SHEET SIZE ARE NOT TO SCALE.

EHN PROJECT MANAGER	SHEET NUMBER
TCM DRAWN BY	A4.01
9020 PROJECT NUMBER	
29 MARCH 2022 RELEASE DATE	© COPYRIGHT 2022 PARETTE SOMJEN ARCHITECTS LLC.