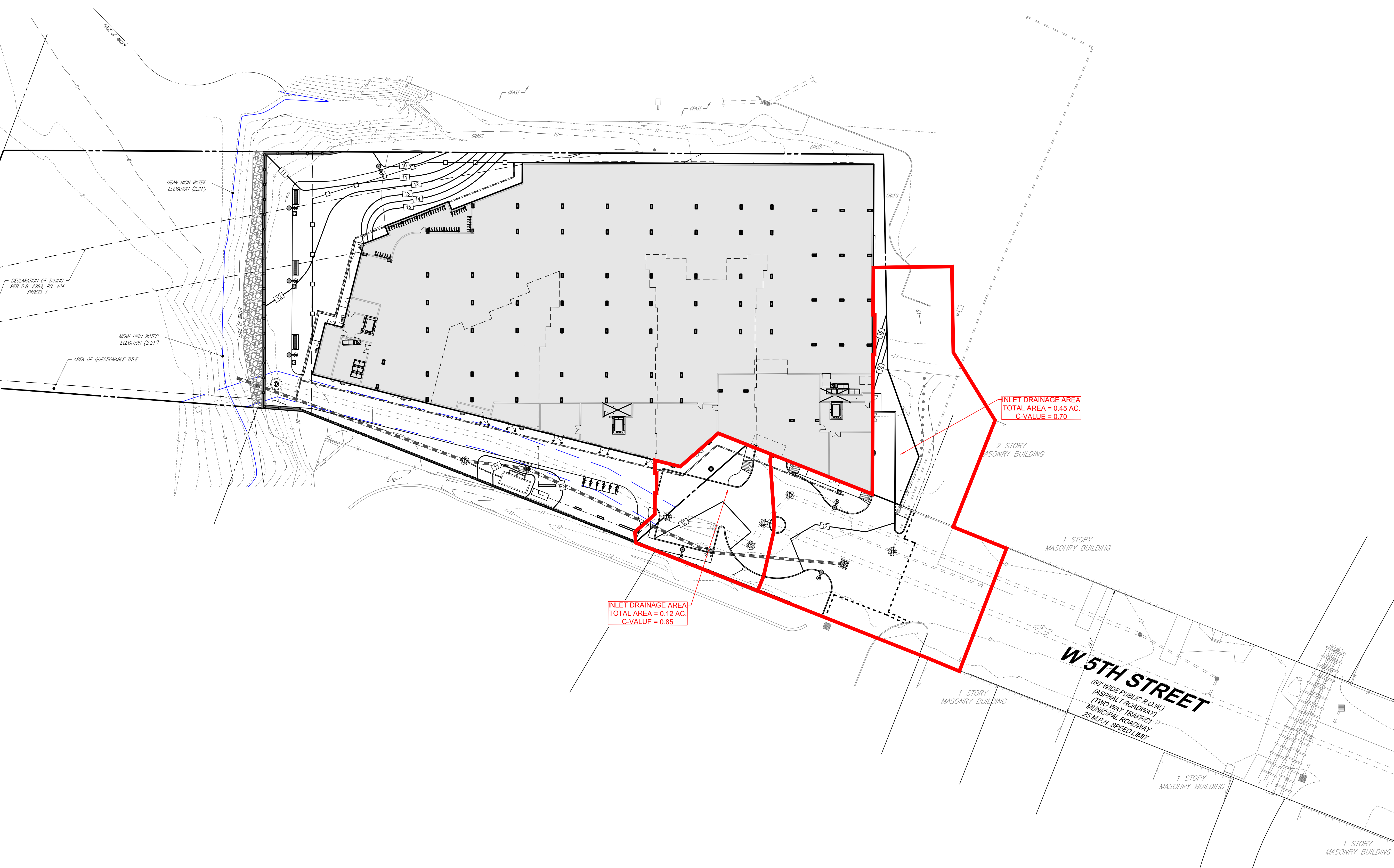




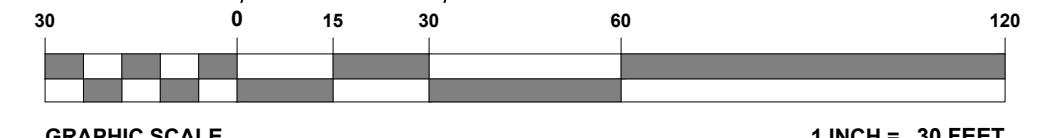
NAD 83

NEWARK BAY



INLET DRAINAGE AREA
TOTAL AREA = 0.12 AC.
C-VALUE = 0.85

INLET DRAINAGE AREA
TOTAL AREA = 0.45 AC.
C-VALUE = 0.70



BOHLER
 SITE CIVIL AND CONSULTING ENGINEERING
 PROGRAM MANAGEMENT
 LANDSCAPE ARCHITECTURE
 SUSTAINABLE DESIGN
 PERMITTING SERVICES
 TRANSPORTATION SERVICES

REVISIONS

REV	DATE	COMMENT	CHECKED BY
1	06/22/2021	REV. PER TOWNSHIP COMMENTS	AJH AT
2	12/21/2021	REV. PER TOWNSHIP COMMENTS	AJH AT
3	03/08/2022	REV. PER TOWNSHIP COMMENTS	AJH AT
4	04/01/2022	REV. PER NJDEP COMMENTS	AJH AT
5	08/08/2022	REV. PER UPDATED ARCHITECTURAL	ACF AT
6	12/09/2022	REV. FOR FINAL APPROVAL	AJH AT

811
 Know what's below.
 Call before you dig.
 NEW JERSEY
 YOU MUST CALL 811 BEFORE ANY EXCAVATION WHETHER IT'S ON PRIVATE OR PUBLIC LAND.
 1-800-272-1000
 www.nj-811.org

ISSUED FOR MUNICIPAL & AGENCY REVIEW & APPROVAL

THIS DRAWING IS INTENDED FOR MUNICIPAL AND/OR AGENCY REVIEW AND APPROVAL. IT IS NOT INTENDED AS A CONSTRUCTION DOCUMENT UNLESS INDICATED OTHERWISE.

PROJECT No.: J190828
 DRAWN BY: AJH
 CHECKED BY: AT
 DATE: 03/24/2021
 CAD ID: J190828-IDA-6A

PROJECT:
FINAL MAJOR SITE PLAN & MINOR SUBDIVISION
 FOR
BAYONNE LUXURY WATERWALK LLC
 PROPOSED LUXURY APARTMENTS
 MAP: 77; BLK: 301.01; LOTS: 1, 2 & 3
 211-219 WEST 5TH STREET
 CITY OF BAYONNE
 HUDSON COUNTY, NEW JERSEY

BOHLER
 BOHLER ENGINEERING NJ, LLC
 10000 MIDLANTIC DRIVE, SUITE 410W
 MOUNT LAUREL, NJ 08054
 Phone: (856) 930-4000
 Fax: (856) 930-4001
 www.BohlerEngineering.com
 NJ CERT. OF AUTHORIZATION NO. 246A28191700 & M6000122

A. TAMOUS
 PROFESSIONAL ENGINEER
 NEW JERSEY LICENSE No. 46184
 PENNSYLVANIA LICENSE No. 73909

SHEET TITLE:
INLET DRAINAGE AREA MAP
 SHEET NUMBER:
3
 REVISION 6 - 12/09/2022

G:\0101\190828\DRAWINGS\CURRENT DRAWINGS\SUPPLEMENT DRAWINGS\DRAINAGE MAPS\J190828-IDA-6A-3-LAYOUT-3.DWG