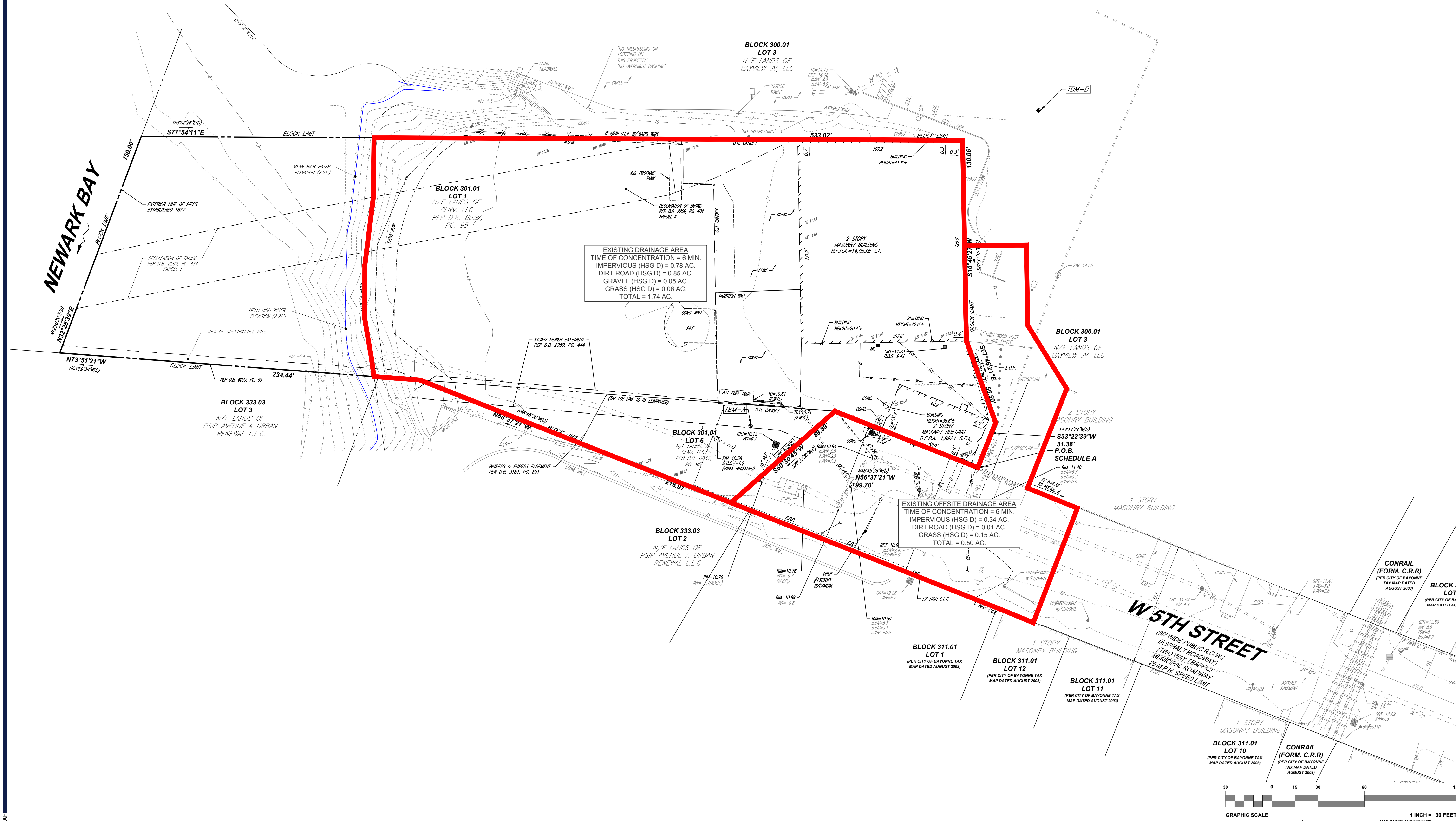




NAD 83



**BOHLER**  
 SITE CIVIL AND CONSULTING ENGINEERING  
 PROGRAM MANAGEMENT  
 LANDSCAPE ARCHITECTURE  
 SUSTAINABLE DESIGN  
 PERMITTING SERVICES  
 TRANSPORTATION SERVICES

**REVISIONS**

REV	DATE	COMMENT	CHECKED BY
1	06/22/2021	REV. PER TOWNSHIP COMMENTS	AJH
2	12/21/2021	REV. PER TOWNSHIP COMMENTS	AJH
3	03/08/2022	REV. PER TOWNSHIP COMMENTS	AJH
4	04/01/2022	REV. PER NJDEP COMMENTS	AJH
5	08/08/2022	REV. PER UPDATED ARCHITECTURAL	ACF
6	12/09/2022	REV. FOR FINAL APPROVAL	AJH

**811**  
 Know what's below.  
 Call before you dig.  
 NEW JERSEY  
 YOU MUST CALL 811 BEFORE ANY EXCAVATION WHETHER IT'S ON PRIVATE OR PUBLIC LAND.  
 1-800-272-1000  
 www.nj-811.org

**ISSUED FOR MUNICIPAL & AGENCY REVIEW & APPROVAL**

THIS DRAWING IS INTENDED FOR MUNICIPAL AND/OR AGENCY REVIEW AND APPROVAL. IT IS NOT INTENDED AS A CONSTRUCTION DOCUMENT UNLESS INDICATED OTHERWISE.

PROJECT No.: J190828  
 DRAWN BY: AJH  
 CHECKED BY: 03/24/2021  
 DATE: 03/24/2021  
 CAD ID: J190828-EDA-6A

PROJECT:  
**FINAL MAJOR SITE PLAN & MINOR SUBDIVISION**  
 FOR  
**BAYONNE LUXURY WATERWALK LLC**  
 PROPOSED LUXURY APARTMENTS  
 MAP: 77; BLK: 301.01; LOTS: 1, 2 & 3  
 211-219 WEST 5TH STREET  
 CITY OF BAYONNE  
 HUDSON COUNTY, NEW JERSEY

**BOHLER**  
 BOHLER ENGINEERING NJ, LLC  
 10000 MIDLANTIC DRIVE, SUITE 410W  
 MOUNT LAUREL, NJ 08054  
 Phone: (856) 930-4000  
 Fax: (856) 930-4001  
 www.BohlerEngineering.com  
 NJ CERT. OF AUTHORIZATION NO. 246A28191700 & MH000122

**A. TAMOUS**  
 PROFESSIONAL ENGINEER  
 NEW JERSEY LICENSE No. 46184  
 PENNSYLVANIA LICENSE No. 73950

SHEET TITLE:  
**EXISTING DRAINAGE AREA MAP**  
 SHEET NUMBER:  
**1**  
 REVISION 6 - 12/09/2022

G:\0101\190828\DRAWINGS\CURRENT DRAWINGS\DRAINAGE MAPS\BU190828-EDA-6A-1-LAYOUT.1.DWG