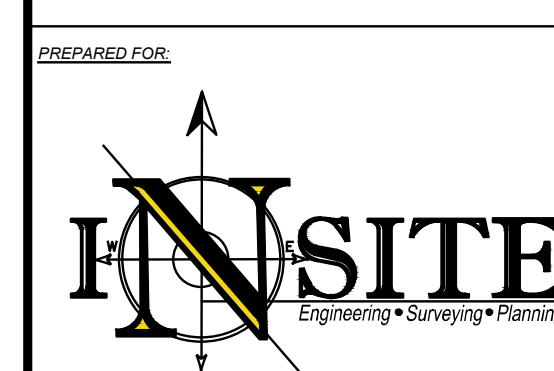


BOUNDARY & TOPOGRAPHIC SURVEY OF BLOCK 359, LOT 4.03 101 EAST SECOND STREET

SITUATED IN: CITY OF BAYONNE, HUDSON COUNTY, NEW JERSEY



CALL BEFORE YOU DIG!	RED
NJ ONE CALL - 800-272-1000	YELLOW
(at least 3 days prior to excavation)	ORANGE
ELECTRICAL	BLUE
GAS/CO	GREEN
COMMUNICATIONS	MAGENTA
WATER	WHITE
SEWER	
TEMP SURVEY MARKINGS	
PROPOSED EXCAVATION	

INSITE Surveying

InSite Surveying, LLC
 CERTIFICATE OF AUTHORIZATION:
 24GA28290100
 1955 ROUTE 34, SUITE 1A, WALL, NJ 07719
 732-531-7100 (PH) 732-531-7344 (FAX)
 InSite@insitesurveying.net
 www.InSiteSurveying.net

REVISIONS

Rev #	Date	Comment
0	02/17/22	INITIAL RELEASE

SCALE: 1"=40' DRAWN BY: BMW
 DATE: 01/24/22 CHECKED BY: JJH
 JOB #: 21-S001-583

CERTIFICATION

THIS IS TO CERTIFY THAT THIS SURVEY IS ACCURATE AND THAT THIS DRAWING IS A TRUE REPRESENTATION OF ACTUAL CONDITIONS EXISTING ON THE PROPERTY, EXCEPT SUCH EASEMENTS, IF ANY, THAT MAY BE LOCATED BELOW THE SURFACE OF THE LANDS, OR ON THE SURFACE OF THE LANDS AND NOT VISIBLE.

A WRITTEN WAIVER AND DIRECTION NOT TO SET CORNER MARKERS HAS BEEN OBTAINED FROM THE ULTIMATE USER PURSUANT TO P.L. 2003 C. 14 (C43-B-36.3) AND N.J.A.C. 17:40 - 5.1(d).

THIS SURVEY WAS PREPARED WITHOUT THE BENEFIT OF A TITLE REPORT AND IS SUBJECT TO ANY EASEMENTS AND RESTRICTIONS CONTAINED THEREIN.

ALL EXISTING UTILITIES ARE APPROXIMATE PER MARKOUT AND VISIBLE FIELD EVIDENCE. ALL UTILITIES SHALL BE FIELD VERIFIED PRIOR TO EXCAVATION.

RAIL ROAD AND SIDE TRACK EASEMENTS PER DB 4592 PG 253 & FM 1855 ARE NOT LOCATED ON SUBJECT PROPERTY.

THIS SURVEY HAS NOT DETERMINED THE PRESENCE OF WETLANDS AT THE SITE.

SUBJECT PROPERTY IS LOCATED IN FEMA PRELIMINARY FLOOD ZONE X AND ZONE X SHADED PER FLOOD HAZARD DATA DATED 1-30-19. SUBJECT PROPERTY IS LOCATED IN FEMA EFFECTIVE FLOOD ZONE X PER FLOOD HAZARD DATA DATED 8-16-2006.

SURVEY MAP REFERENCES:
 1. A MAP ENTITLED "LAYOUT FOR CMU WALL, LOT 4.03, BLOCK 359, TAX MAP OF THE CITY OF BAYONNE, HUDSON COUNTY, N.J., BY FARALLI GROUP, INC., DATED 10-29-2008.
 2. A MAP ENTITLED "MAP OF SURVEY OF PROPERTY LOCATED AT LOT 40 IN BLOCK 359, BAYONNE, HUDSON COUNTY, N.J., 101 EAST SECOND STREET, BAYONNE, N.J., BY CAULFIELD ASSOCIATES, L.P., DATED 01-15-07.

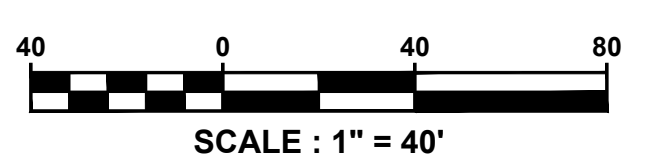
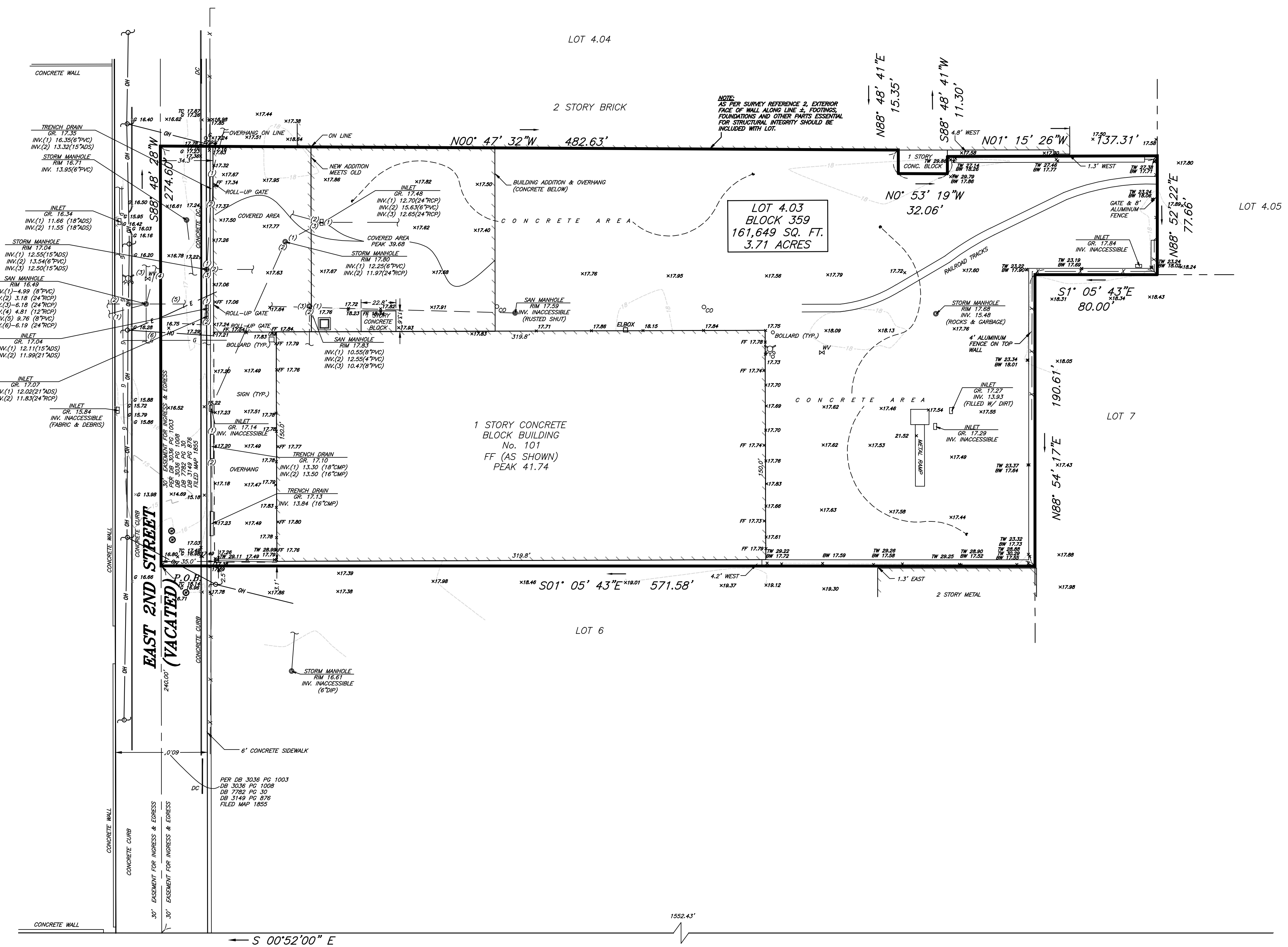
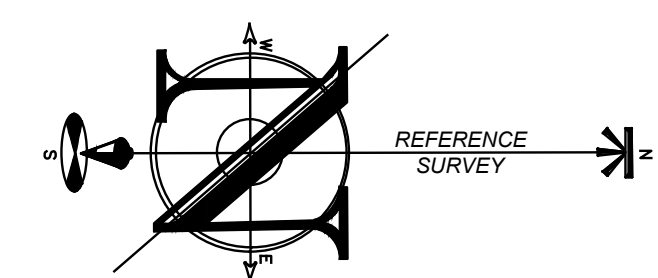
FILED MAP REFERENCES:
 A MAP ENTITLED "SURVEY FOR WAR ASSETS ADMINISTRATION BAYONNE, N.J.," FILED IN THE HUDSON COUNTY CLERKS OFFICE DATED JAN. 4 1949 AS CASE NUMBER 1855.

DEED REFERENCES:
 DB 8176 PG 41
 DB 8091 PG 283
 DB 3036 PG 1003
 DB 3036 PG 1008
 DB 4592 PG 253
 DB 2612 PG 568
 DB 125 PG 156
 DB 7782 PG 30
 DB 3147 PG 876

ALL ELEVATIONS ARE RELATIVE TO THE NORTH AMERICAN DATUM OF 1988 (NAVD88).

CAUTION: IF THIS DOCUMENT DOES NOT CONTAIN THE SIGNATURE AND RAISED SEAL OF THE PROFESSIONAL, IT IS NOT AN ORIGINAL AND MAY HAVE BEEN ALTERED.

JUSTIN J. WEDGES, P.L.S., C.F.S.
 PROFESSIONAL LAND SURVEYOR
 NJ LIC. NO. GS43362
 CERTIFIED FLOODPLAIN SURVEYOR NJ LIC. NO. NJ-044



LEGEND

EXISTING	DESCRIPTION
--- (dashed line)	BOUNDARY LINE
--- (solid line)	CONTOUR LINE
• (dot)	SPOT ELEVATION
--- (thick line)	BUILDING
--- (double line)	WALL
G (with symbol)	GAS
W (with symbol)	WATER
□ (with symbol)	INLET
⊙ (with symbol)	STORM
⊙ (with symbol)	SANITARY MAIN
--- (with symbol)	OVERHEAD WIRE
E (with symbol)	ELECTRIC
T (with symbol)	TELEPHONE
--- (with symbol)	UTILITY POLE
--- (with symbol)	HYDRANT
--- (with symbol)	SIGN POST
--- (with symbol)	FENCE
• (with symbol)	LIGHT FIXTURE
• (with symbol)	TEST PIT LOCATION
--- (with symbol)	GRADE FLOW ARROW
--- (with symbol)	SWALE CENTER LINE

File: S:\Sub\5188 - Hudson County\5188-01-000-01 - 101 East 2nd Street_Bayonne, NJ\20220604\Comp\20220604 - Survey.dwg -> 210501583 - 24x36 SURVEY
 Copyright 2022, InSite Surveying, LLC. All Rights Reserved.