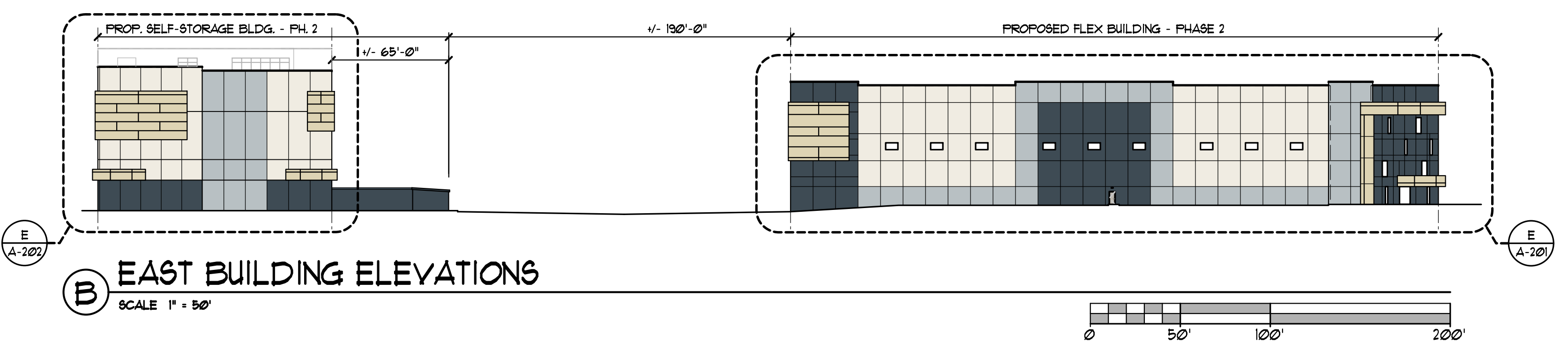
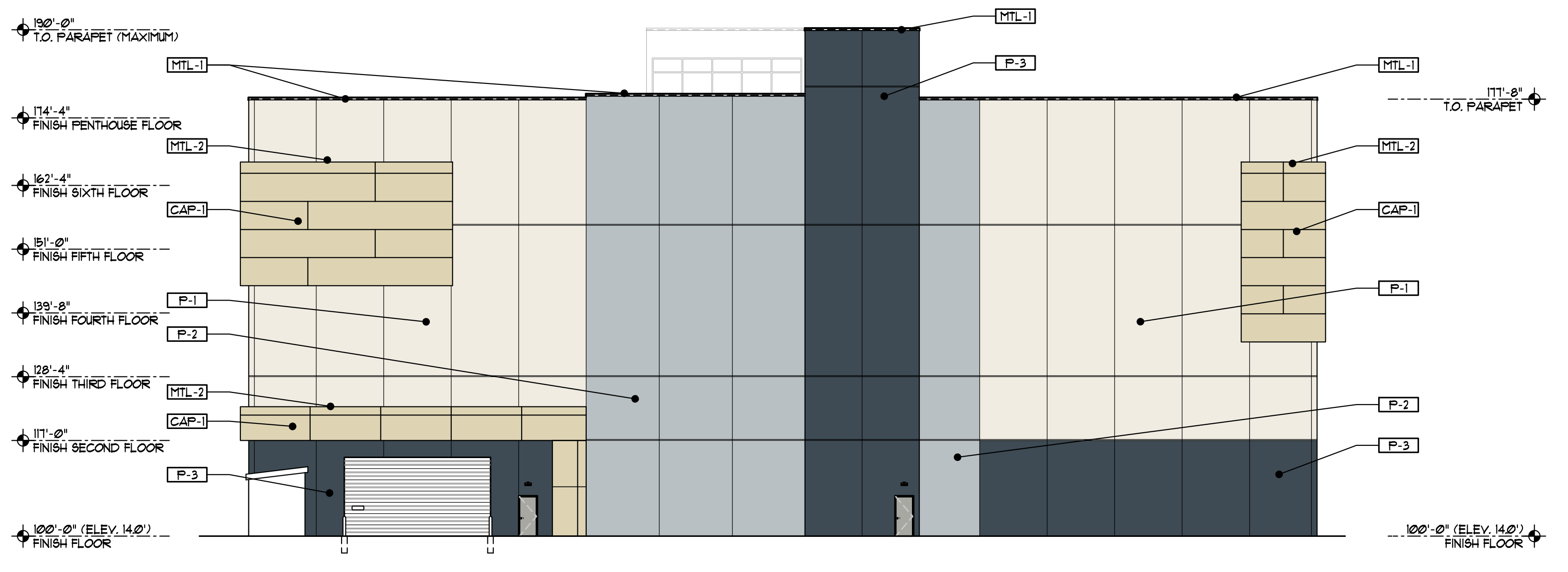


A SOUTH BUILDING ELEVATIONS
 SCALE 1" = 50'



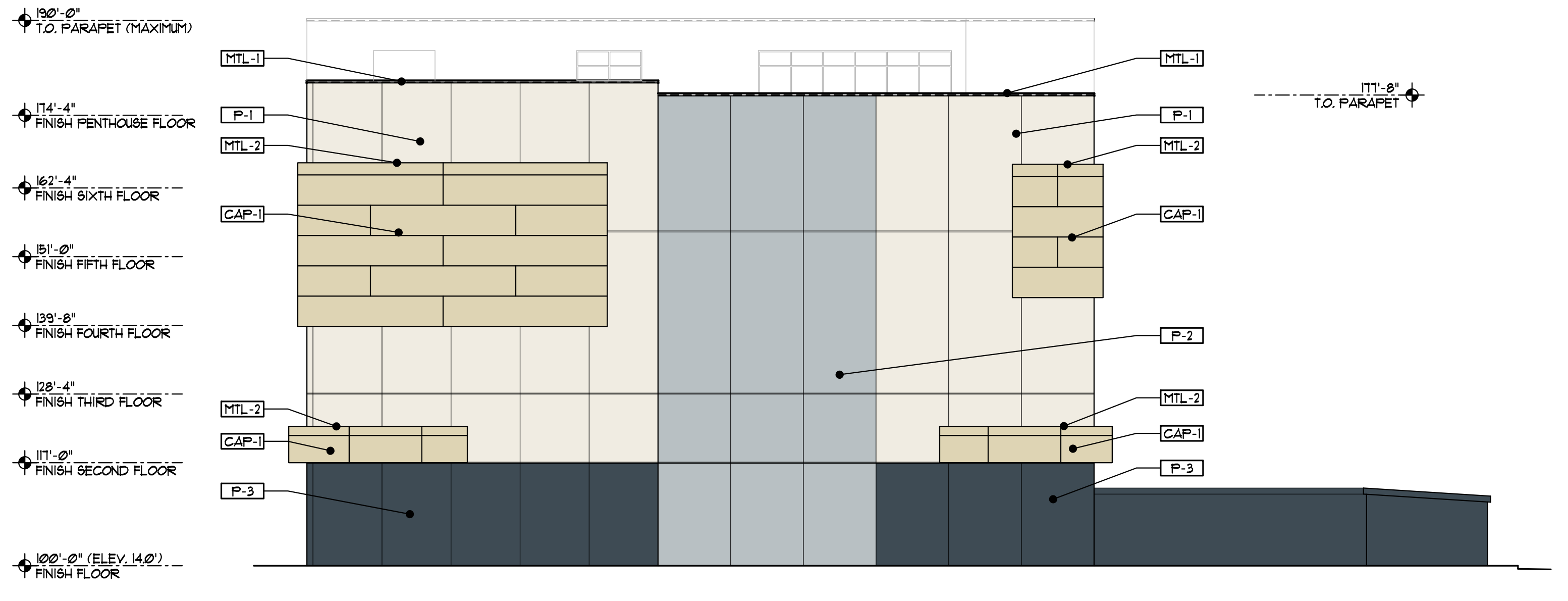
B EAST BUILDING ELEVATIONS
 SCALE 1" = 50'



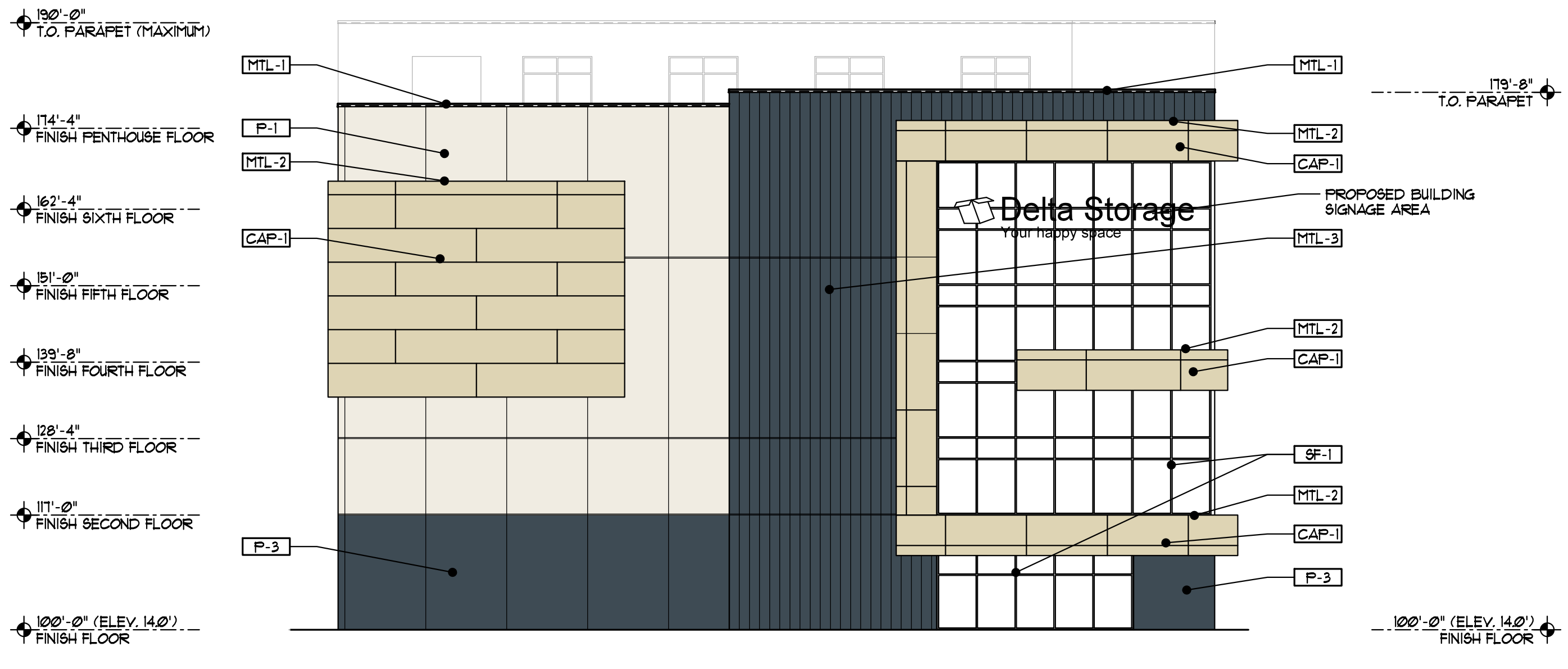
C PROPOSED SELF-STORAGE BUILDING NORTH ELEVATION
 SCALE 1/16" = 1'-0"



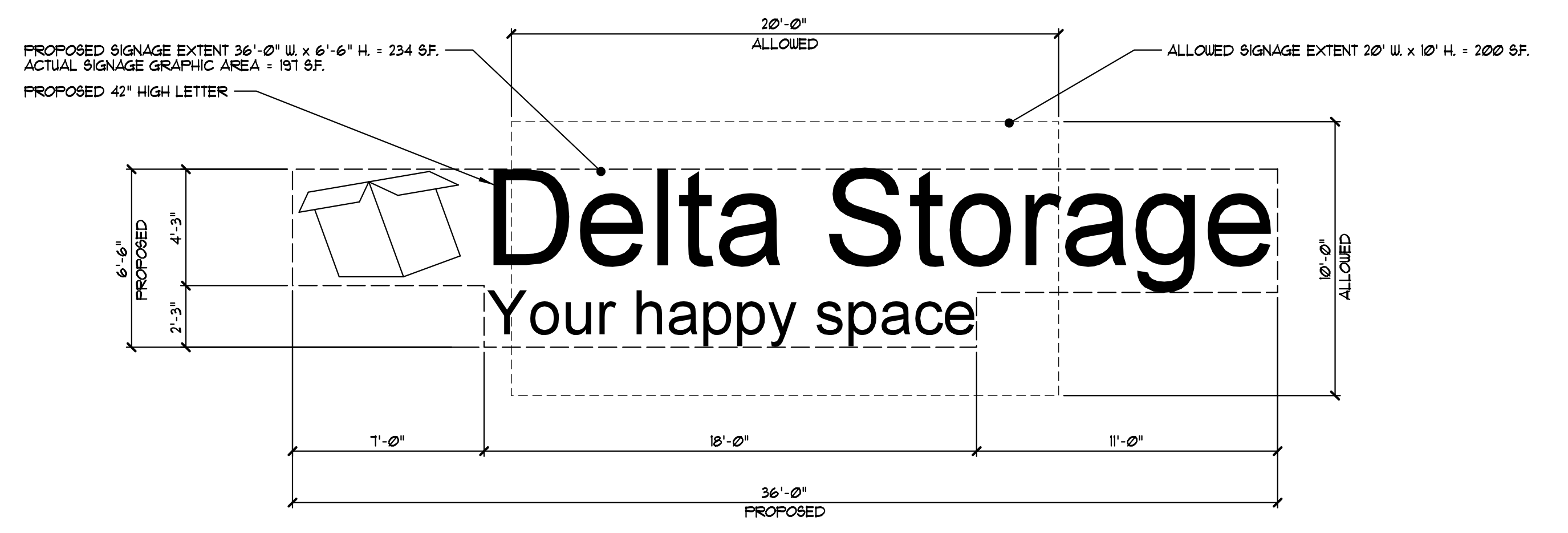
D PROPOSED SELF-STORAGE BUILDING SOUTH ELEVATION
 SCALE 1/16" = 1'-0"



E PROPOSED SELF-STORAGE BUILDING EAST ELEVATION
 SCALE 1/16" = 1'-0"



F PROPOSED SELF-STORAGE BUILDING WEST ELEVATION
 SCALE 1/16" = 1'-0"



G PROPOSED BUILDING SIGN
 SCALE 1/4" = 1'-0"

SHELL BUILDING MATERIAL FINISH KEY			
MARK	MANUFACTURER	DESCRIPTION	REMARKS
PREFINISHED METAL			
MTL-1	PAC-CLAD	PREFINISHED ALUMINUM (24 GA) COLOR - 'MATTE BLACK'	COPING / EDGE / CAP FLASHING
MTL-2	PAC-CLAD	PREFINISHED ALUMINUM (24 GA) COLOR - 'SIERRA TAN'	COPING / EDGE / CAP FLASHING
MTL-3	CENTRIA	PREFINISHED STEEL COLOR - 'BLACK'	VERTICAL METAL PANEL
PREFINISHED COMPOSITE ALUMINUM PANEL			
CAP-1	ARCONIC	PREFINISHED METAL PANEL SYSTEM FINISH - 'TENDER OAK'	WOOD GRAIN
CURTAIN WALL / STOREFRONT / WINDOW SYSTEM			
SF-1	KAINEER	PREFINISHED ALUMINUM COLOR - 'BLACK'	1" INSULATED GLAZING
EXTERIOR PAINT / TEXTURED ACRYLIC COATING (WALL PANEL)			
P-1	SHERWIN WILLIAMS	TEXTURED ACRYLIC COATING MATCH COLOR SW #1021 'ALPACA'	EXTERIOR FIELD / ACCENT COLOR (SEMIGLOSS PAINT AT METAL)
P-2	SHERWIN WILLIAMS	TEXTURED ACRYLIC COATING MATCH COLOR SW #1023 'REQUISITE GRAY'	EXTERIOR FIELD / ACCENT COLOR (SEMIGLOSS PAINT AT METAL)
P-3	SHERWIN WILLIAMS	TEXTURED ACRYLIC COATING MATCH COLOR SW #1029 'DOMINO'	EXTERIOR FIELD / ACCENT COLOR (SEMIGLOSS PAINT AT METAL)

SIXTH WAVE LOGISTICS PHASE II
 NEW HOOK ROAD
 BAYONNE, NEW JERSEY 07002
 FOR
SIXTH WAVE DEVELOPMENT
 66-71 NEW HOOK ROAD, BAYONNE, NEW JERSEY 07002



ISSUE	REVISION	DATE
TBC	REVIEW	JULY 26, 2022
PLANNING BOARD	REVIEW	OCT 26, 2022
	REVIEW	DEC 02, 2022

PROPOSED SELF-STORAGE BUILDING ELEVATIONS
 A-202
 SIXTH WAVE PHASE 2