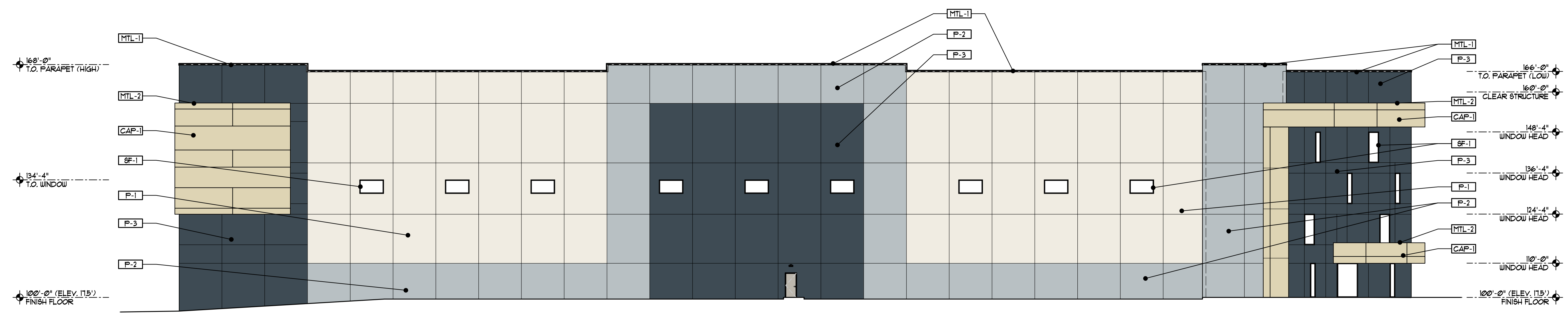
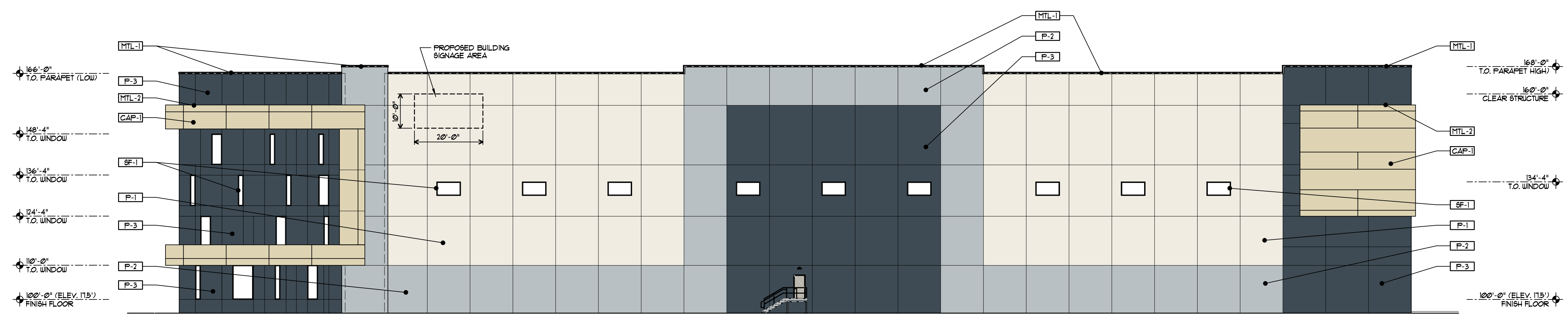


**C** PROPOSED FLEX BUILDING NORTH ELEVATION  
 SCALE 1/16" = 1'-0"

**D** PROPOSED FLEX BUILDING SOUTH ELEVATION  
 SCALE 1/16" = 1'-0"



**E** PROPOSED FLEX BUILDING EAST ELEVATION  
 SCALE 1/16" = 1'-0"



**F** PROPOSED FLEX BUILDING WEST ELEVATION  
 SCALE 1/16" = 1'-0"

SHELL BUILDING MATERIAL FINISH KEY			
MARK	MANUFACTURER	DESCRIPTION	REMARKS
<b>PREFINISHED METAL</b>			
[MTL-1]	PAC-CLAD	PREFINISHED ALUMINUM (24 GA) COLOR - 'MATTE BLACK'	COPING / EDGE / CAP FLASHING
[MTL-2]	PAC-CLAD	PREFINISHED ALUMINUM (24 GA) COLOR - 'SIERRA TAN'	COPING / EDGE / CAP FLASHING
<b>PREFINISHED COMPOSITE ALUMINUM PANEL</b>			
[CAP-1]	ARCONIC	PREFINISHED METAL PANEL SYSTEM FINISH - 'TENDER OAK'	WOOD GRAIN
<b>CURTAIN WALL / STOREFRONT / WINDOW SYSTEM</b>			
[SF-1]	KAWNEER	PREFINISHED ALUMINUM COLOR - BLACK	1" INSULATED GLAZING
<b>EXTERIOR PAINT / TEXTURED ACRYLIC COATING (WALL PANEL)</b>			
[P-1]	SHERWIN WILLIAMS	TEXTURED ACRYLIC COATING MATCH COLOR SW #1021 'ALPACA'	EXTERIOR FIELD / ACCENT COLOR (SEMIGLOSS PAINT AT METAL)
[P-2]	SHERWIN WILLIAMS	TEXTURED ACRYLIC COATING MATCH COLOR SW #1023 'REQUISITE GRAY'	EXTERIOR FIELD / ACCENT COLOR (SEMIGLOSS PAINT AT METAL)
[P-3]	SHERWIN WILLIAMS	TEXTURED ACRYLIC COATING MATCH COLOR SW #3893 'DOMINO'	EXTERIOR FIELD / ACCENT COLOR (SEMIGLOSS PAINT AT METAL)
ALTERNATE APPROVED EQUAL MANUFACTURER / PRODUCTS MAY BE SUBSTITUTED			

**SIXTH WAVE LOGISTICS PHASE II**  
 NEW HOOK ROAD  
 BAYONNE, NEW JERSEY 07002  
 FOR  
**SIXTH WAVE DEVELOPMENT**  
 69-71 NEW HOOK ROAD, BAYONNE, NEW JERSEY 07002

Copyright 2022. All drawings are and shall remain the property of Ford & Associates Architects, Inc. and may not be used, duplicated or altered without the written consent of the Architect.



ISSUE	REVISION	DATE
TRC	REVIEW	JULY 28, 2022
REVIEW	PLANNING BOARD	OCT 26, 2022
		DEC 02, 2022

**PROPOSED FLEX BUILDING ELEVATIONS**  
 FA # 2204100  
**A-201**  
 SIXTH WAVE PHASE 2