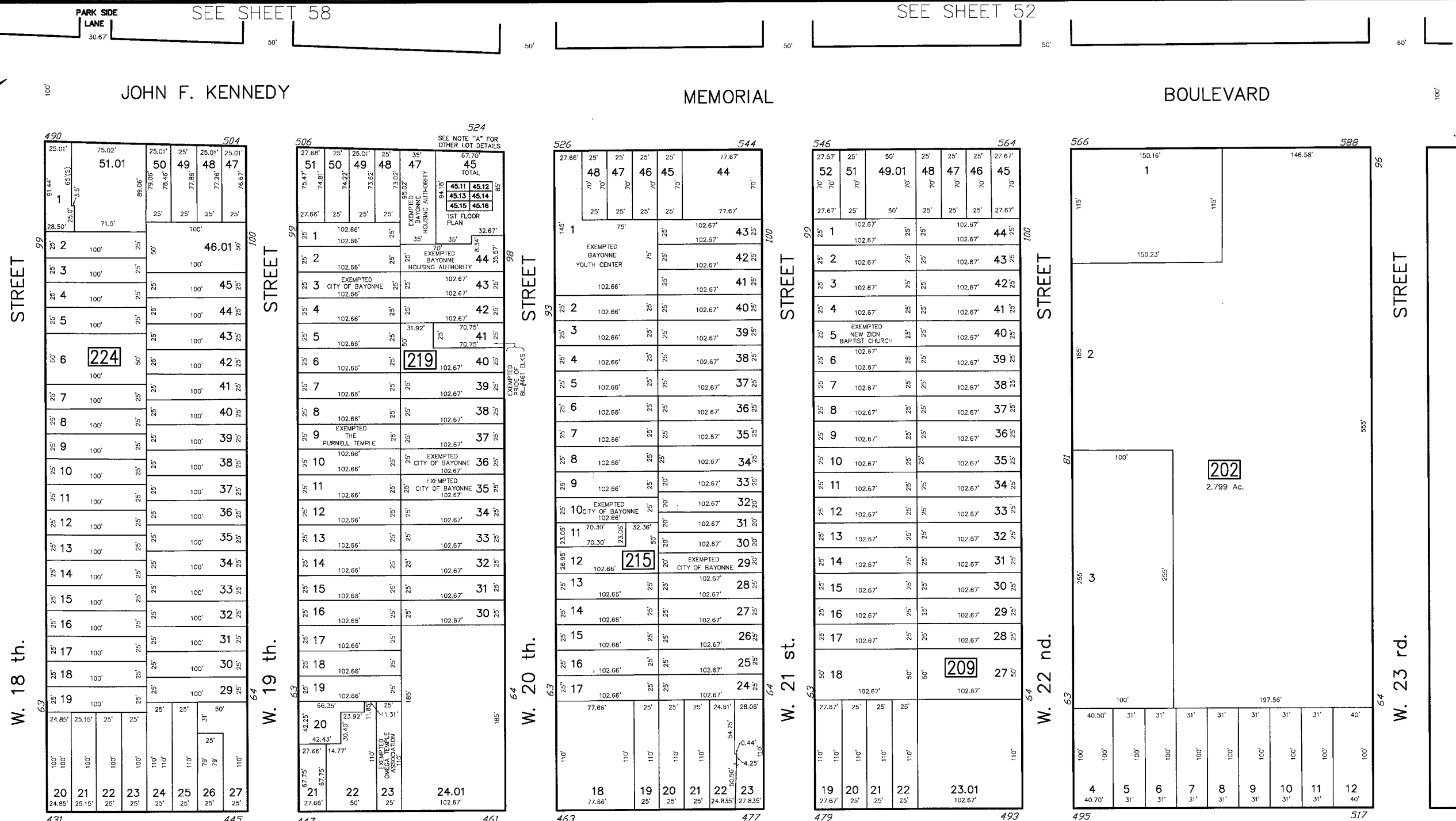
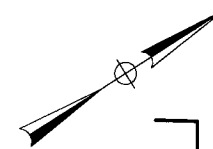


# TAX MAP

DATE	REVISIONS	LIC. NO.
07/20/06	RICHARD A MORALLE, P.E. & P.L.S.	GR23863

SEE SHEET 59



SEE SHEET 58

SEE SHEET 52

NOTE "A"  
 REMAINING LOTS  
 SECOND FLOOR 45.21 THRU 45.26  
 THIRD FLOOR 45.31 THRU 45.36  
 FOURTH FLOOR 45.41 THRU 45.46

SEE SHEET 54

SEE SHEET 49

TAX MAP  
 CITY OF BAYONNE  
 HUDSON COUNTY, NEW JERSEY  
 SCALE: 1" = 50' AUGUST, 2003  
 RICHARD A. MORALLE, P.E., P.L.S.  
 T & M ASSOCIATES  
 11 TINDALL ROAD, MIDDLETOWN TOWNSHIP  
 NEW JERSEY, 07748