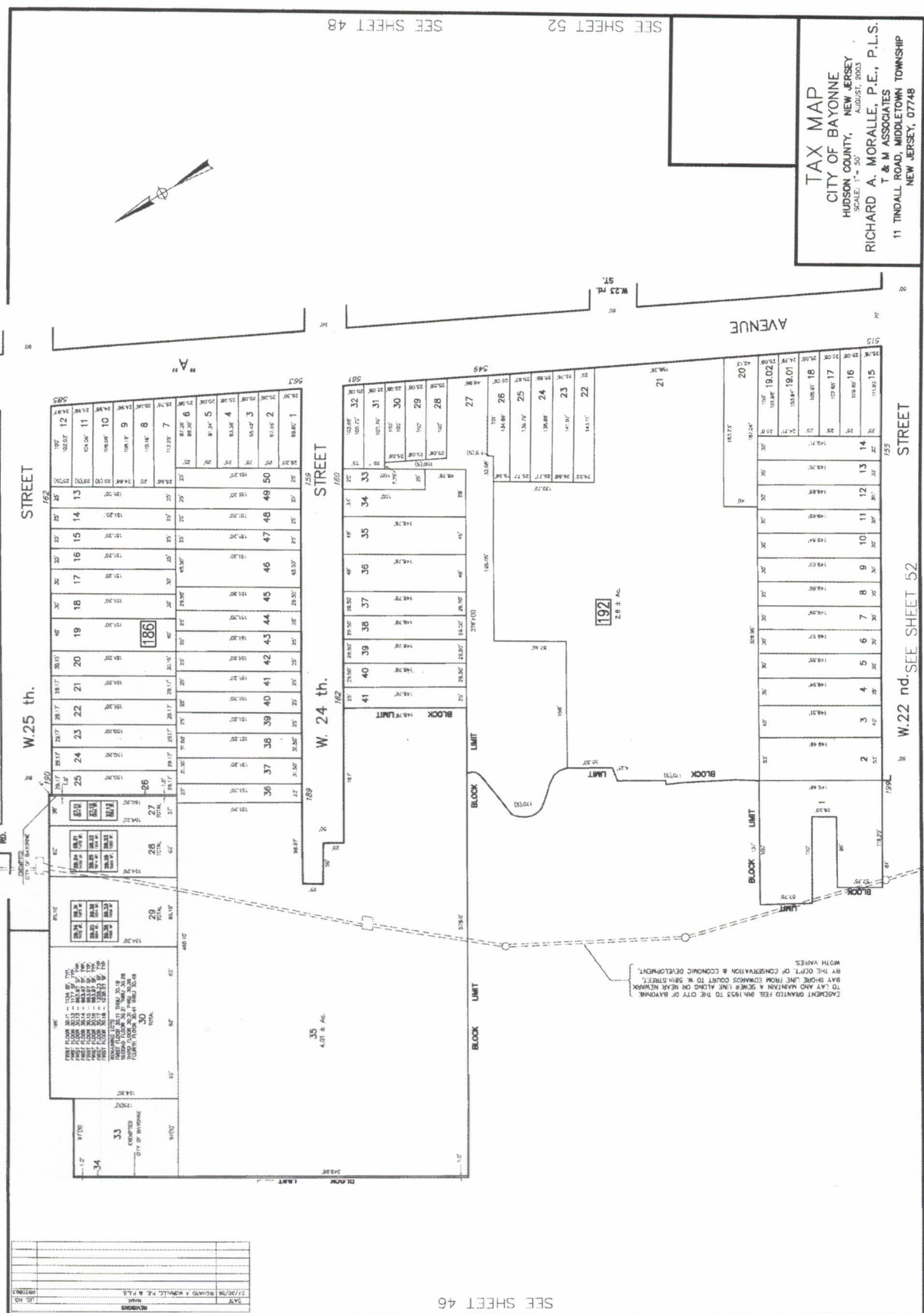


TAX MAP
 CITY OF BAYONNE
 HUDSON COUNTY, NEW JERSEY
 SCALE: 1" = 30'
 AUGUST, 2003
 RICHARD A. MORALLE, P.E., P.L.S.
 T & M ASSOCIATES
 11 TINDALL ROAD, MIDDLETOWN TOWNSHIP
 NEW JERSEY, 07748



SEE SHEET 45

47

NO.	DATE	DESCRIPTION
1	12/20/02	REVISIONS
2	12/20/02	REVISIONS
3	12/20/02	REVISIONS
4	12/20/02	REVISIONS
5	12/20/02	REVISIONS
6	12/20/02	REVISIONS
7	12/20/02	REVISIONS
8	12/20/02	REVISIONS
9	12/20/02	REVISIONS
10	12/20/02	REVISIONS
11	12/20/02	REVISIONS
12	12/20/02	REVISIONS
13	12/20/02	REVISIONS
14	12/20/02	REVISIONS
15	12/20/02	REVISIONS
16	12/20/02	REVISIONS
17	12/20/02	REVISIONS
18	12/20/02	REVISIONS
19	12/20/02	REVISIONS
20	12/20/02	REVISIONS
21	12/20/02	REVISIONS
22	12/20/02	REVISIONS
23	12/20/02	REVISIONS
24	12/20/02	REVISIONS
25	12/20/02	REVISIONS
26	12/20/02	REVISIONS
27	12/20/02	REVISIONS
28	12/20/02	REVISIONS
29	12/20/02	REVISIONS
30	12/20/02	REVISIONS
31	12/20/02	REVISIONS
32	12/20/02	REVISIONS
33	12/20/02	REVISIONS
34	12/20/02	REVISIONS
35	12/20/02	REVISIONS
36	12/20/02	REVISIONS
37	12/20/02	REVISIONS
38	12/20/02	REVISIONS
39	12/20/02	REVISIONS
40	12/20/02	REVISIONS
41	12/20/02	REVISIONS
42	12/20/02	REVISIONS
43	12/20/02	REVISIONS
44	12/20/02	REVISIONS
45	12/20/02	REVISIONS
46	12/20/02	REVISIONS
47	12/20/02	REVISIONS
48	12/20/02	REVISIONS
49	12/20/02	REVISIONS
50	12/20/02	REVISIONS

SEE SHEET 46

EASEMENT GRANTED FEB 24-1925 TO THE CITY OF BAYONNE BY THE CITY OF CONSERVATION & ECONOMIC DEVELOPMENT. TO LAY MAINTAIN A SEWER LINE ALONG OR NEAR NETWORK BAY SHORE LINE FROM EDWARDS COURT TO W. 24th STREET.

35
 4.01 ± AC.

192
 2.8 ± AC.

156
 1.0 ± AC.

W. 25 th.

W. 24 th.

AVENUE

STREET

SEE SHEET 52

W. 22 nd.

SEE SHEET 52

SEE SHEET 48

SEE SHEET 52