

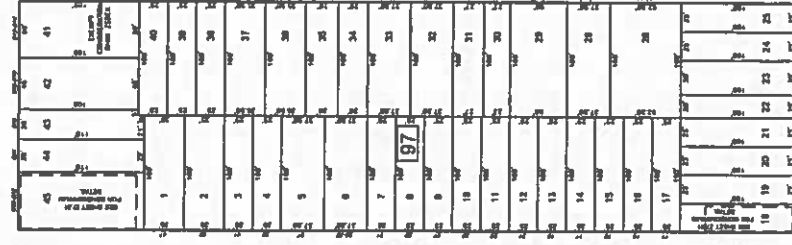
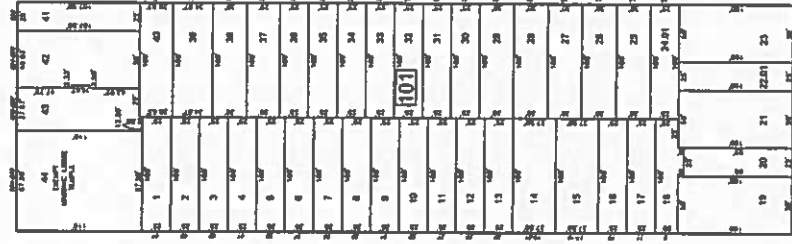
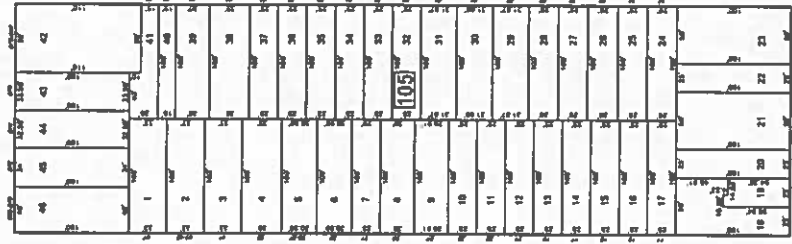
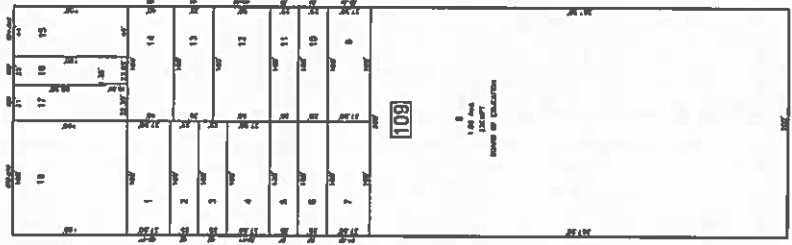
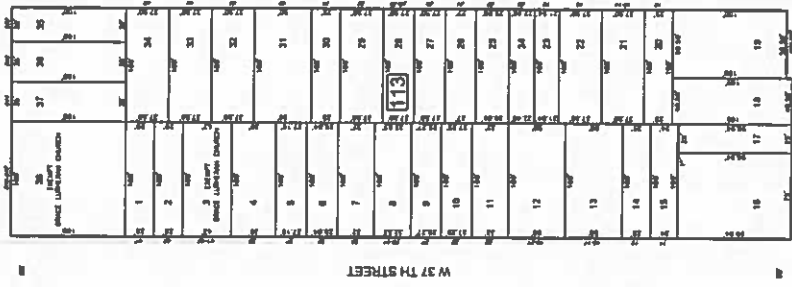
SHEET 24

SHEET 26

SHEET 30



AVENUE "C"



SHEET 23

BROADWAY

E 42 ND ST

E 41 ST ST

E 40 TH ST

E 39 TH ST

E 38 TH ST

E 37 TH ST

SHEET 25

SHEET 31

THIS MAP HAS BEEN GIVEN A FORMAL CERTIFICATION BY THE DIVISION OF TAXATION ON DECEMBER 3, 2010, SIGNED BY SHELLY REILLY AND LATOYA ROBERTSON ASSIGNED SERIAL NUMBER 1094

TAX MAP  
CITY OF BAYONNE

ED CLAY  
ASSIGNED SERIAL NUMBER 1094

\* THIS SHEET HAS BEEN REVISIONED. SEE COMMENTS AND REVISIONS FOR MORE DETAILS AND COORDINATE REVISIONS (ECCO).

DATE	BY	REVISIONS	BLOCK	LOT